

# **The Level**

## **Consultation Report March 2011**

For the public consultation carried out on the restoration proposals for The Level

**Prepared by  
Brighton & Hove City Council**

**Version 1  
June 2011**

## TABLE OF CONTENTS

---

TABLE OF CONTENTS .....	i
LIST OF FIGURES .....	ii
LIST OF TABLES.....	ii
DOCUMENT CONTROL.....	iii
1 INTRODUCTION .....	1
1.1 Background to the Project.....	1
1.2 Historic significance.....	1
1.3 Heritage Lottery Funding.....	2
1.4 Purpose of this report .....	2
2 METHODOLOGY AND MATERIALS.....	4
2.1 Methodology .....	4
2.2 Responses .....	6
2.3 Questionnaire Structure.....	9
3 RESULTS.....	10
3.1 About your household .....	10
3.2 Your views on the park design proposals .....	12
3.3 Breakdown of choice of design options.....	15
4 SUMMARY .....	21
4.1 Response to the questionnaire.....	21
4.2 Use of the park.....	21
4.3 Designs .....	22
5 CONCLUSIONS.....	24
5.1 Overall concept .....	24
5.2 Position of skatepark .....	24
5.3 Areas people would appreciate .....	25
5.4 Activities people are interested in .....	25
5.5 Balanced representation and response rate .....	25
6 APPENDICES .....	27
Appendix A – Example of questionnaire information booklet .....	28
Appendix B – Example of questionnaire form.....	33
Appendix C – Example of poster .....	37
Appendix D – Example of A1 board.....	38
Appendix E – 15 minute walking catchment.....	39
Appendix F – Comments on Design Choice.....	40

## LIST OF FIGURES

---

Figure 1 Source of completed questionnaires.....	6
Figure 2 Age range of respondents.....	7
Figure 3 Comparison of respondent ages in 2009 and 2011 .....	7
Figure 4 Ethnicity of respondents .....	8
Figure 5 Comparison of responses from ethnic minorities in 2009 and 2011 .....	8
Figure 6 Respondents household make up.....	10
Figure 7 Main reasons respondents use The Level .....	11
Figure 8 Preferred design option.....	12
Figure 9 Elements of the park respondents would appreciate .....	13
Figure 10 What respondents would like to see held at The Level.....	14
Figure 11 Design options for respondents within 15 minute catchment against whole sample.....	15
Figure 12 Design choice against household type .....	16
Figure 13 Design choice against the respondents reasons to visit The Level .....	17
Figure 14 Design choice against the elements of the park respondents would appreciate .....	17
Figure 15 Design choice against the activities respondents would enjoy .....	18
Figure 16 Design choice against the age of the respondent .....	19
Figure 17 Design choice against gender .....	19
Figure 18 Design choice against disability .....	20

## LIST OF TABLES

---

Table 1 Number and age of children of respondents with children.....	10
--	----

## DOCUMENT CONTROL

---

This document is owned by:

Brighton & Hove City Council  
City Parks Projects Team  
Hollingdean Depot  
Upper Hollingdean Road  
Brighton  
BN1 7GA

The data has been analysed by:

Brighton & Hove City Council  
Corporate Research and City Parks Project Teams

The report has been written by:

Brighton & Hove City Council  
City Parks Project Team

<b>Version</b>	<b>Date</b>	<b>Details</b>
1.0	22 <sup>nd</sup> June 2011	Issued

## 1 INTRODUCTION

---

### 1.1 Background to the Project

---

The Level is one of Brighton & Hove's community and destination parks covering 8.05 hectares. It has a wide and diverse catchment covering three wards, and is a popular venue for active and passive recreation. Under-investment in the 1970's led to a decline of the fabric of the park, and many of the original features were left to deteriorate or were removed, and planting was cut back to keep costs down. The site now suffers a high level of anti-social behaviour, in particular as a hot-spot for drug and alcohol related problems.

In the Parks & Green Spaces Strategy 2006, The Level received a poor quality index scoring of -40, the only major park with a negative rating. It was identified as a priority for re-development and this led to the current work to improve The Level and make it more welcoming for people of all ages and abilities to enjoy and to celebrate its cultural heritage.

### 1.2 Historic significance

---

The significance of The Level as an open green recreational space commences from mid 18<sup>th</sup> Century when it was used as a cricket ground for the Prince of Wales.

In 1822 it was formally laid out as a park, and in 1845 a grand avenue of 1,000 Elms were planted along the outer walkway as a gift from the Third Earl of Chichester. Although many were destroyed in the 1987 storm, today it has national importance as possibly the only double avenue of Elms in the country.

Historic records show that the shape of The Level remained unchanged from this period, and the next significant period was in the 1920's when Captain Bertie Hubbard MacLaren, the Superintendent of the Brighton Parks Department developed a scheme for a new playground which was arranged to obtain '*as much of the picturesque as possible*'. His symmetrical layout included features such as shelters, pergolas, ornamental boating pond and bridges intended to disguise the play equipment and create a garden setting for other users.

While some of these features are still evident, the remnants of the scheme appear random and neglected.

### **1.3 Heritage Lottery Funding**

---

Various consultations have taken place over the past ten years with the aim of improving The Level and the skatepark. While some changes have come about as a result of these consultations, sufficient funding has not been available to bring about any major improvements.

At the start of 2009, the council identified the Heritage Lottery Fund and Big Lottery Fund 'Parks for People' grant as one of the only sources of funding available for a large scale project such as this. An initial enquiry confirmed we were eligible to apply.

Concept designs were then developed with the aim of restoring some of the key heritage features of the park. These designs took into account feedback from previous public consultations and workshops attended by a wide range of service providers including council officers, third-sector organisations and statutory bodies. The proposals included new features such as a new café with indoor and outside seating, toilets, staff offices and a new sunken concrete skatepark.

In 2009 a bid for 'Parks for People' funding was started and consultation events held in October of that year showed a strong degree of support to improve The Level. Included in the proposals were two options for the location of a new sunken skatepark, one in its existing location south of Rose Walk and the other in a new location at the north edge of the park. In total 378 local residents completed questionnaires; a majority of 57% preferred the option to move the skatepark to the north while 31% preferred it in its existing location. The remaining liked neither, didn't have a preference or like both.

A successful first round application was submitted in March 2010 with a decision given in July. A development grant was awarded to enable the full development of the Master Plan, Management and Maintenance Plan, Conservation Management Plan and Activity Plan in preparation for the competitive second and final round application.

During this development phase, local community groups had expressed concerns about moving the skatepark and it was decided to launch a more extensive consultation, with detailed plans, in order to gauge public opinion more conclusively, and to support the second stage 'Parks for People' bid in August 2011.

### **1.4 Purpose of this report**

---

This report details the results from the public consultation held in March 2011, provides an analysis of the information and makes

recommendations for the way ahead. Where relevant it refers to and compares data from the 2009 consultation.

## **2 METHODOLOGY AND MATERIALS**

---

### **2.1 Methodology**

---

This consultation aimed to get people's preferences on the location of the skatepark within The Level. The survey also asked questions on what kind of events and activities people would be interested in and what elements of the new designs residents would appreciate the most. This differs from the consultation carried out in 2009 which aimed to get people's views and suggestions on different aspects of the park and of two concept designs.

The information gained from this research will be used to support a final decision on the Master Plan and in particular skatepark location.

Other information collated in the build up to this consultation and used to inform the Master Plan includes previous consultation results; data from workshops and meetings held with service providers (council officers, statutory bodies and third sector organisations), local residents, community group representatives and minority groups; historic maps, images and written documents; heritage park design professionals; and parks staff. This information is not included in this report, instead has been incorporated in to the relevant supporting documents, e.g. the Conservation Management Plan, Activity Plan and Community Safety Plan.

The source of this data was gathered from Consultees through questionnaires. They were designed with closed questions in order to provide comparative analysis of responses although there was space for respondents to add comments and clarify certain answers.

Consultation packs which included an information leaflet, questionnaire and a pre-paid envelope were sent to 27,291 households within a 15 minute walking distance catchment of the park.

Consultation packs which included an information leaflet, questionnaire and a pre-paid envelope were sent to 27,291 households within a 15 minute walking distance catchment of the park. Examples of these can be found in appendices A and B.

The 15 minute walk catchment is based on the council's adopted accessibility standards for parks and open space in the city's Local Development Framework, which was informed by the findings of a public consultation carried out for the Citywide Open Space, Sport and Recreation Study in 2008/9. This study determined that 15 minutes was the



maximum time people were willing to walk to their local park. It is also in line with guidance from the Department for Children Schools and Families (now Department of Education) Design for Play Guidance where 15 minutes walk is the catchment area for Neighbourhood Equipped Areas for Play (NEAPs).

Questionnaires were also available on the Brighton & Hove City Council's consultation portal and at five staffed consultation exhibitions throughout March. These exhibitions were held at Churchill Square, Phoenix Gallery opposite St Peter's Church and in the old Co-op building on the corner of Baker Street and London Road.

Information was also available at three unstaffed exhibitions during March at the Jubilee Library and at the old Co-op building on the corner of Baker Street and London Road.

At each exhibition displays included the two design options, an artist impression of the two designs, background information on the project, the history of the park and further details of the skatepark, water feature and café layout. Members of the project team were in attendance at the staffed exhibitions to provide information and answer questions.

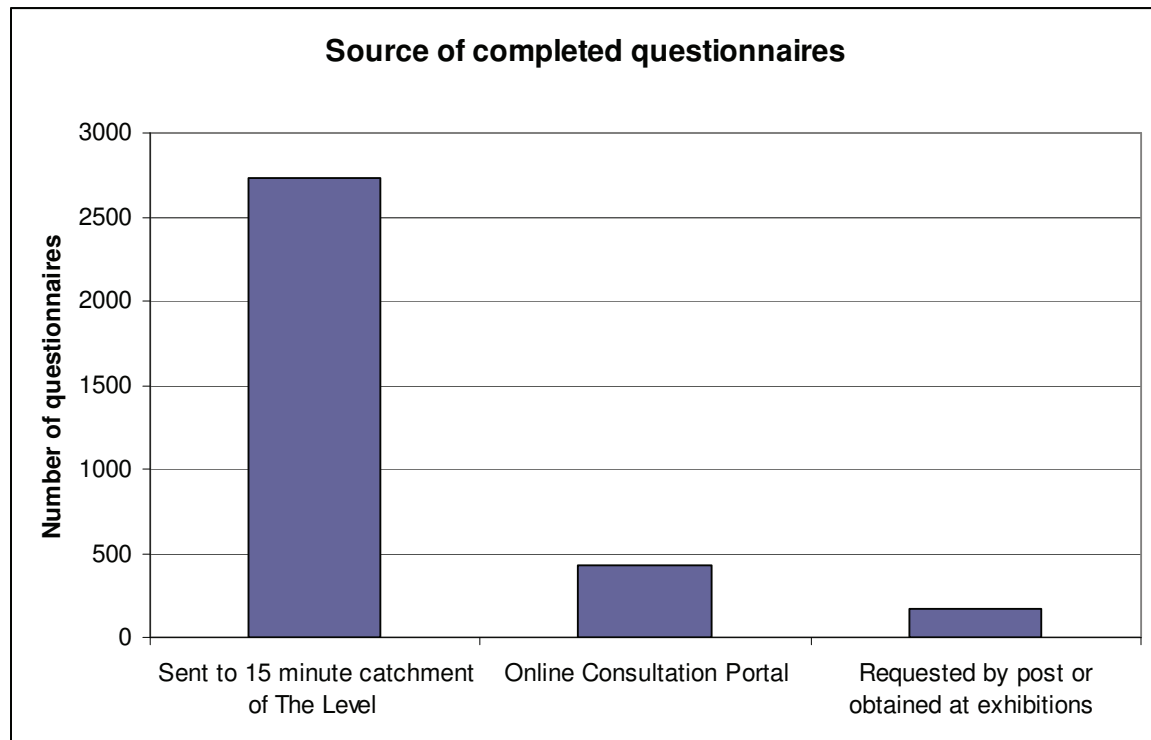
In order to raise awareness prior to the consultation, the same households within the 15 minutes walk catchment of The Level were sent a newsletter in December 2010 to inform them of the forthcoming consultation and other ways they can become involved. The newsletter told the story so far and gave details of two draft designs. Posters to raise awareness and six A1 sized boards were also put up around The Level at the same time providing similar information.

Web updates, update emails to residents on The Level mailing list and press releases also were used to raise awareness. A double page spread was published in The Argus on 20 January 2011 which provided information on the history of the project, the proposals for the park and information on the forthcoming consultations.

In the weeks leading up the consultation period in March, posters advertising the consultation and exhibitions were distributed by hand to local businesses around the park and mailed out to libraries, council offices, neighbouring resident associations, community groups and were displayed at the park. The consultation dates were advertised on the council's website, on the council's social media sites and in The Argus. The six A1 size information boards around The Level were changed in March to advertise the consultation and give information about the designs being consulted on. Examples of the poster and boards used can be found in appendices C and D.

## 2.2 Responses

A total of 3,330 completed questionnaires were received. Over 80% (2,735) of these were from respondents who returned the questionnaire they received as part of the direct mail-out to households within a 15 minute walk catchment of the park, 436 questionnaires were completed on the online portal and the remaining 169 were requested or obtained at one of the exhibitions. Almost all (99%) responses were received from households within the boundary of Brighton & Hove.



**Figure 1 Source of completed questionnaires**

Of these, 57% of respondents were female, 38% male, 1% were transgender and 4% did not answer this question. Over a fifth (22%) of respondents in the consultation were aged between 35 and 44 and 12% of the total respondents stated they had a disability.

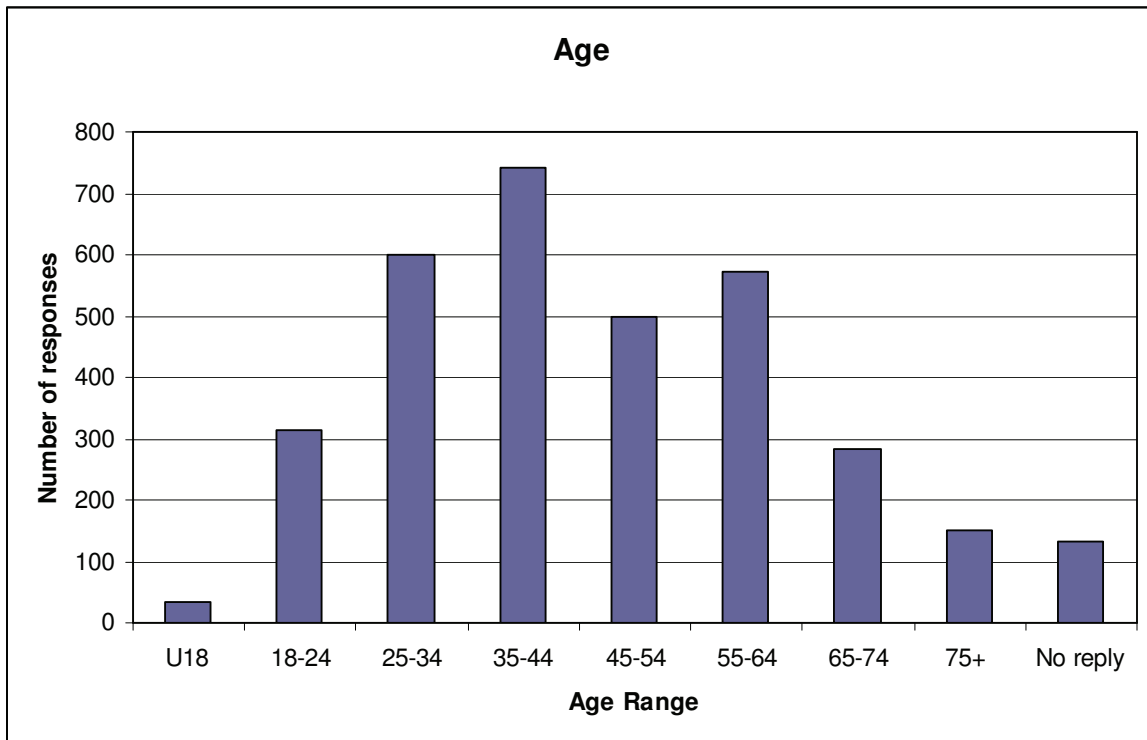


Figure 2 Age range of respondents

In comparison with the respondents in the 2009 consultation double the amount of responses were received from people of 65 years and over and a higher response from people with disabilities. However, over 12% less completed surveys were received from young people under the age of 18.

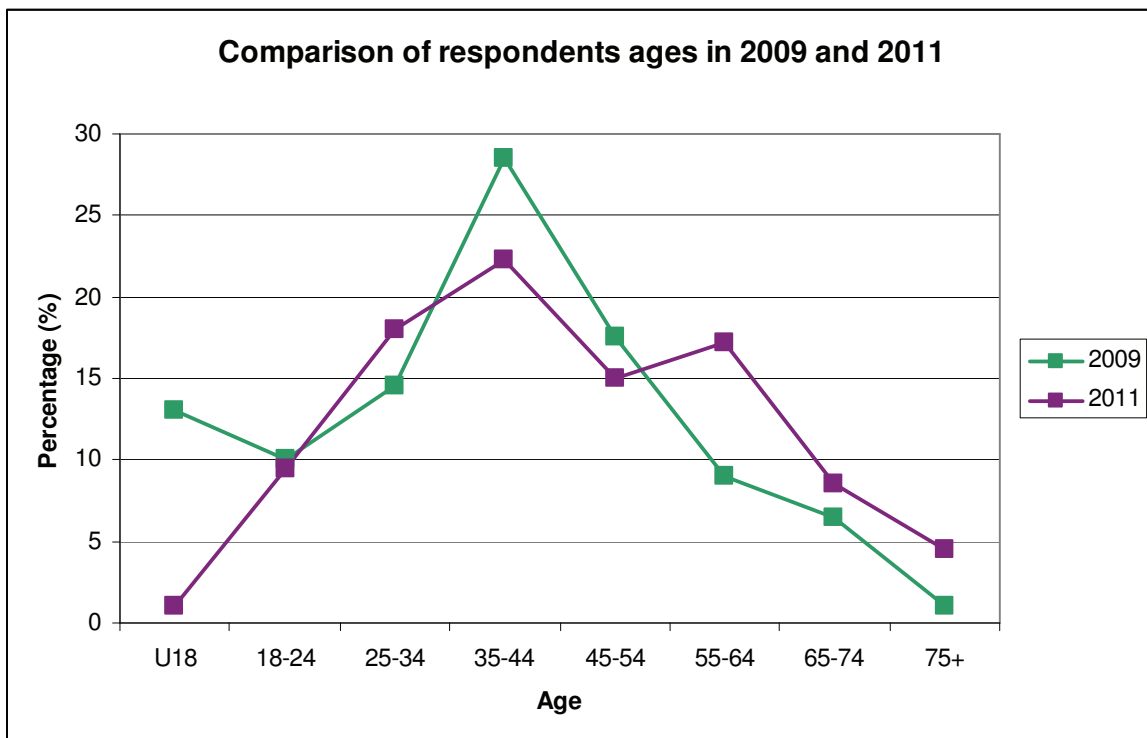


Figure 3 Comparison of respondent ages in 2009 and 2011

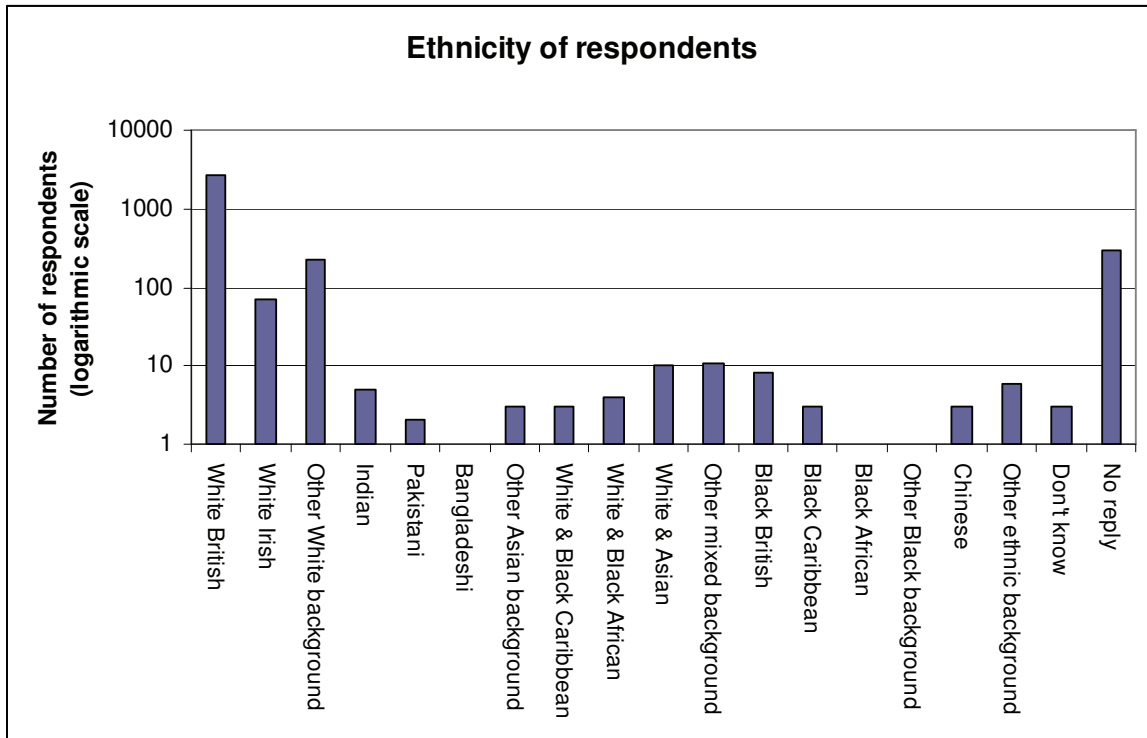


Figure 4 Ethnicity of respondents

The majority of respondents were of White ethnicity. This is similar to the 2009 consultation responses. However, as illustrated in Figure 5 below, a wider range of responses from minority ethnic backgrounds were received in the 2011 consultation.

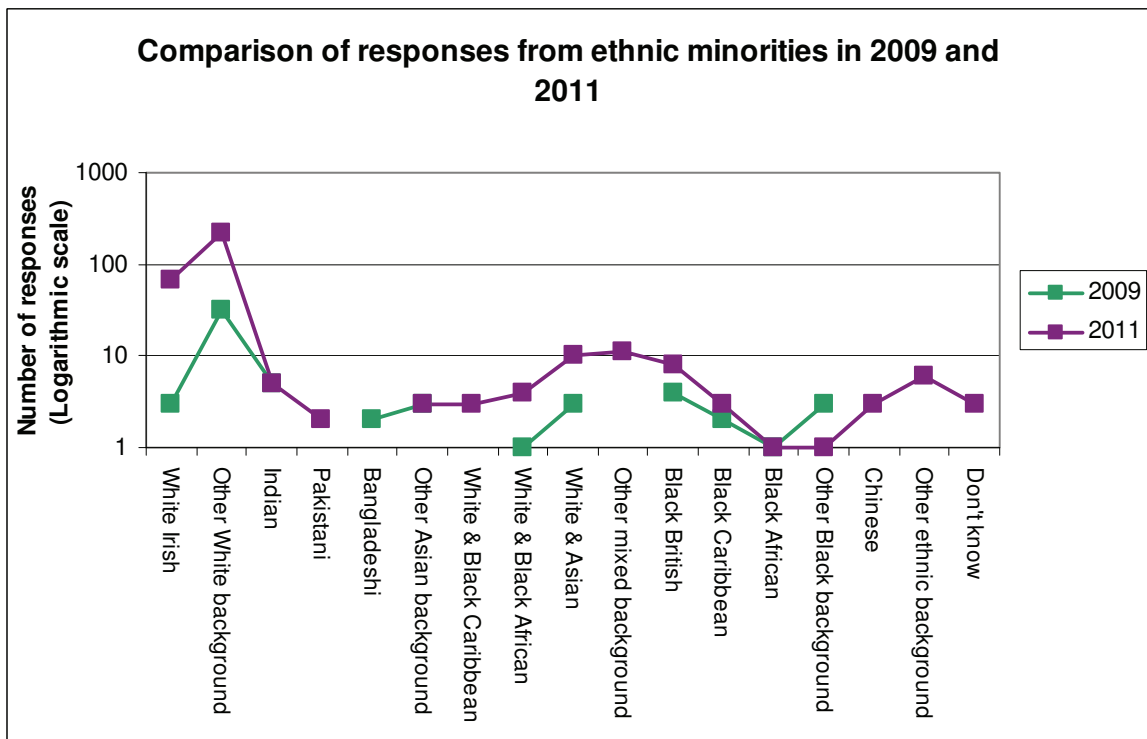


Figure 5 Comparison of responses from ethnic minorities in 2009 and 2011

### **2.3 Questionnaire Structure**

---

The questionnaire was divided into three main sections. The first section gathered information about the make up of the household and why people use The Level.

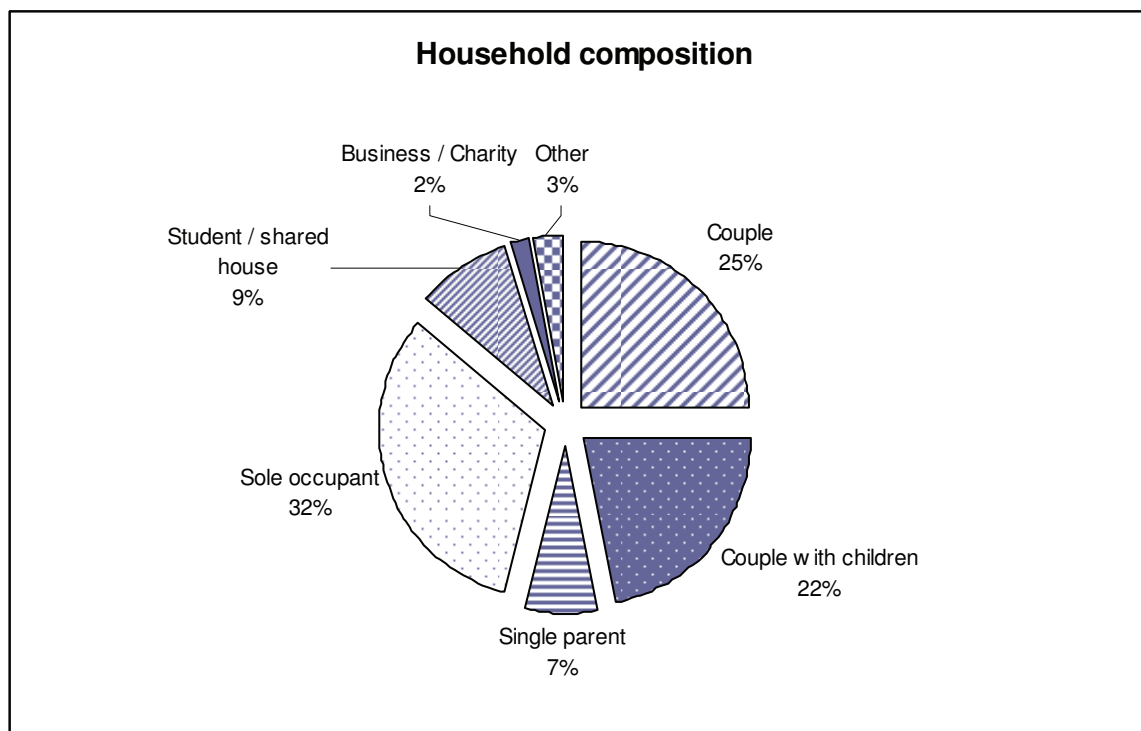
The second section gathered views on the park design proposals. Two options were drawn up, with the main difference being the location of the skatepark. This section also gathered information about the areas of the park and activities that respondents would be interested in. The final section gathered demographic information.

### 3 RESULTS

#### 3.1 About your household

##### 3.1.1 Question 1 - What is the make-up of your household?

The majority of households to complete a questionnaire were made up of couples, couples with children and sole occupants.



**Figure 6 Respondents household make up**

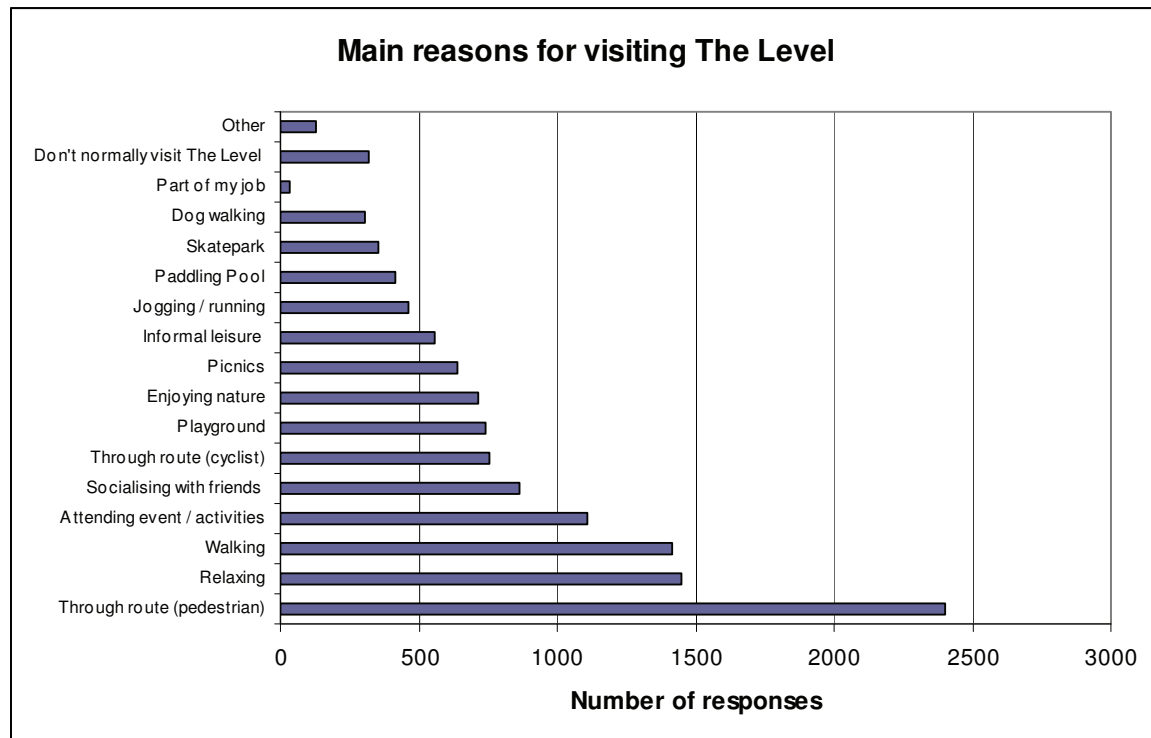
##### 3.1.2 Question 2 - For households with children, please indicate age range and number of children?

Over two thirds of households with children who responded have one child, of these respondents 68% of the children were aged 16 and over. Over a third of the households with two children have children aged five and under.

No. of children aged	1	2	3	4	5
under 5	317	101	2	3	0
5 to 11	271	99	15	1	1
12 to 15	190	33	1	0	0
16+	1700	79	12	4	3
<b>Total</b>	<b>2478</b>	<b>312</b>	<b>30</b>	<b>8</b>	<b>4</b>

**Table 1 Number and age of children of respondents with children**

### 3.1.3 Question 3 - What are the main reasons members from your household visit The Level?



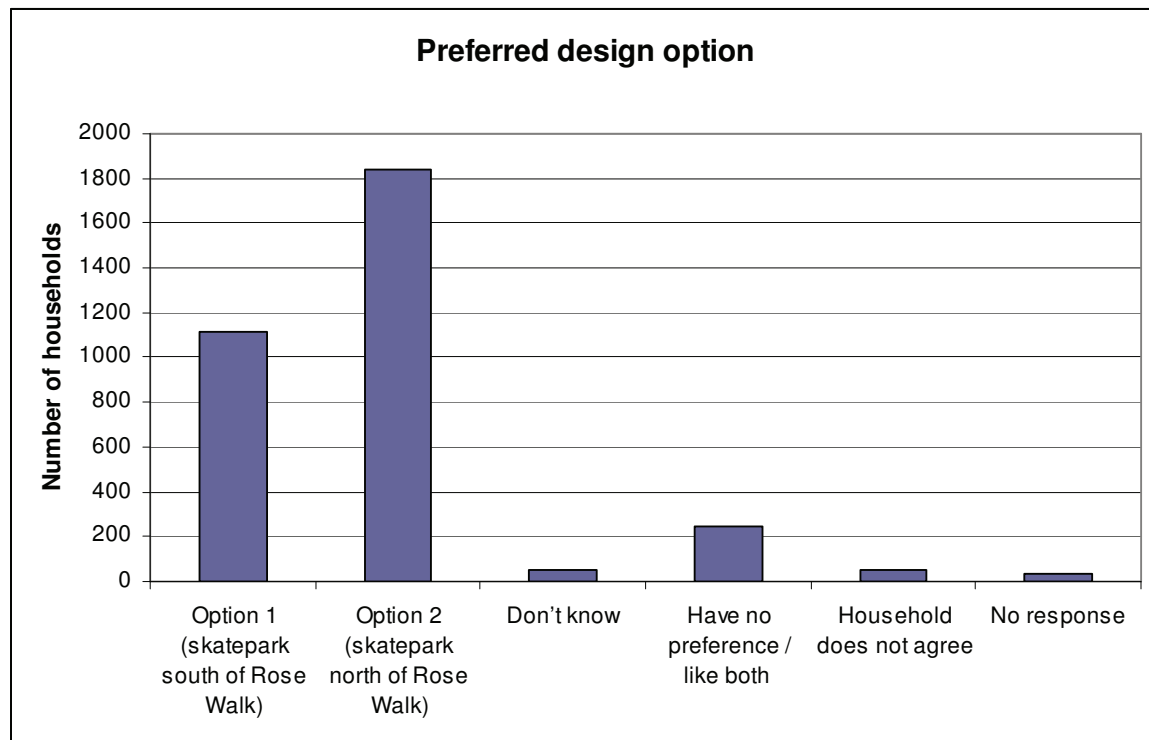
**Figure 7 Main reasons respondents use The Level**

Respondents could choose more than one option. The majority of respondents said they use The Level as a pedestrian or cycle through-route and many people use it as a place to walk, relax, socialise and attend events and activities. The playground, enjoying nature and picnics were also popular and 320 respondents said they didn't normally use the park.

Respondents also stated they use The Level for the café, Tai Chi, cycling, petanqué and for visiting the funfair, and informal activities such as circus skills and playing music were also mentioned as activities that the park is used for.

## 3.2 Your views on the park design proposals

### 3.2.1 Question 4 - Which design option does your household prefer?



**Figure 8 Preferred design option**

The most popular choice for the site of the new skatepark by 55% of all respondents is to move it to the north of the Rose Walk. 33.5% preferred it to remain where it was and the remaining 11.5% did not have a preference.

Of those households who made a choice, 62% would like it to be moved to north of the Rose Walk and 38% keep it to the south of Rose Walk.

Of the respondents who preferred to relocate the skatepark to the north of the Rose Walk, nearly 400 people commented on how *'it would be good to keep the area south of The Level as a tranquil space and the north area a space for all activities including the skate park'* whereas option 1 was felt to be *'too congested with too many things in a small space'*.

Of the respondents that chose option 1, over 300 comments were received on keeping the green area in the north of the park green including *'prefer to have a clear green space rather than option 2. Glad for improvements though'* and *'we like the fact that The Level has a big open green space'*. With the northern end of the park open, it was felt that there would be more space *'for flexible provision of a wide range of*



occasional/short term activities and events' and that 'locating the skatepark here (north of the Rose Walk) will limit this.'

The noise generated from the skatepark was also one of the main concerns respondents had about relocating the skatepark to north of the Rose Walk, one respondent felt that '(skateparks) are loud - the continual noise of boards landing is best tucked away behind high hedges, as in option 1'. In opposition to this, some respondents felt that by moving the skatepark the noise would be lesser than in the current location. It was felt that if located to the north of the Rose Walk 'users of skatepark should be able to make a noise without disturbing others' and it 'would be better placed north of Rose Walk in terms of noise for local residents'.

For both of the preferred locations of the skatepark, concerns were raised about the use of alcohol and drug use at The Level; respondents have said they would 'like to see all public drinking of alcohol banned in all areas'. Reservations were also made about the park improvements and 'how renovating it (rather than addressing the drug/alcohol problem) will change this (the drug and alcohol problems)?'.

A summary of the kind of comments respondents made to support their choice can be found in appendix F.

### 3.2.2 Question 5 - Which areas you think individuals in your household would appreciate?

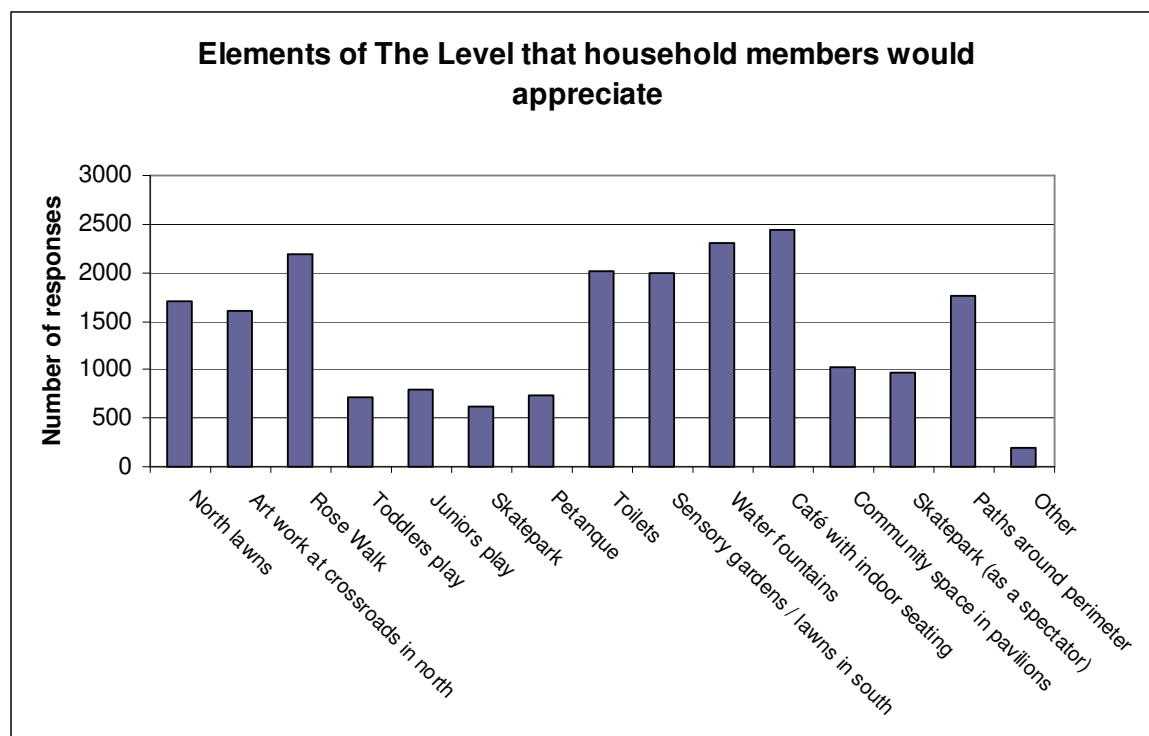
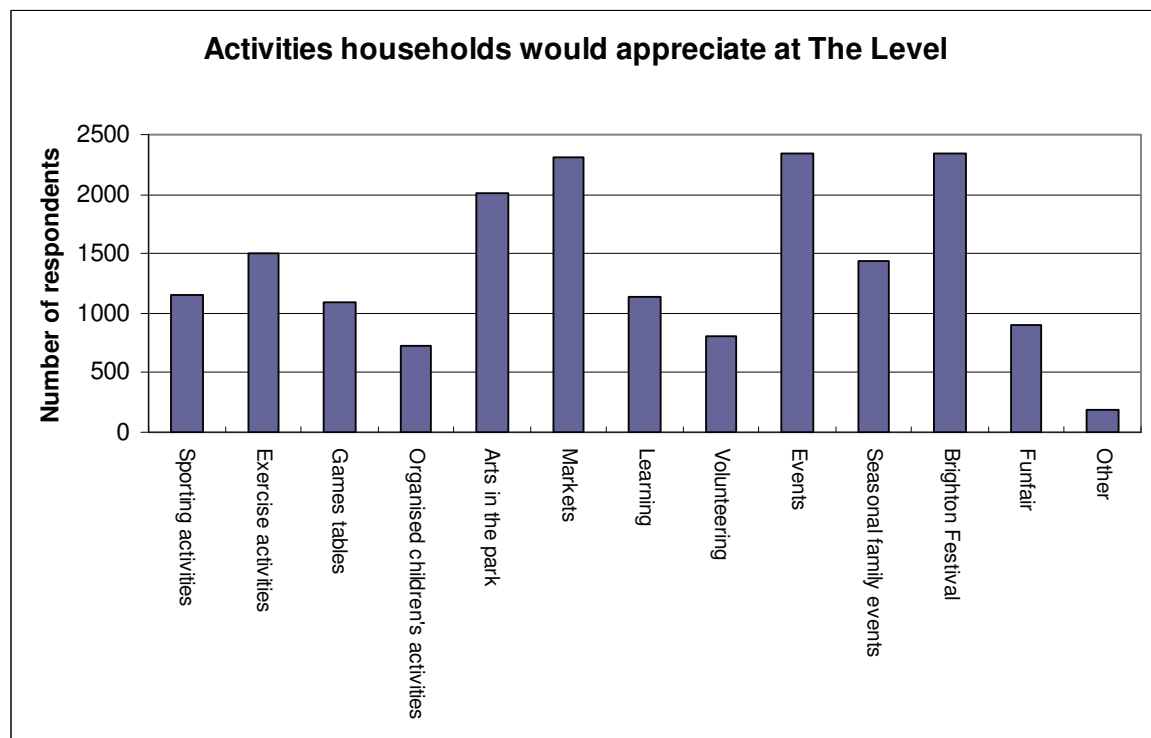


Figure 9 Elements of the park respondents would appreciate

Respondents could choose more than one option and the majority said they would appreciate the new proposed café with indoor seating, public toilets, water fountains and Rose Walk elements within the park. There was significant interest in all the features.

Other suggestions included designated dog walking area, dog free areas, Tai Chi area and cycle paths; there was not a high demand for any one suggestion.

### 3.2.3 Question 6 - What activities individuals in your household would appreciate?



**Figure 10 What respondents would like to see held at The Level**

Many respondents were interested in events (e.g. music in the park, dog shows) being held in the park along with markets and events linked to the Brighton Festival. Other activities that people were interested in were art in the park (e.g. exhibition and classes), sporting activities such as football and Frisbee and seasonal family events including Halloween and Christmas events. There was significant interest in all other activities.

Other suggestions included holding activities to encourage people to get involved with nature, outdoor gym equipment similar to the facilities in Hove Park and Vale Park and a place where people can hold political rallies.

Although nearly 900 respondents said they would like the funfair to continue to be held at The Level, opposition was also put forward against

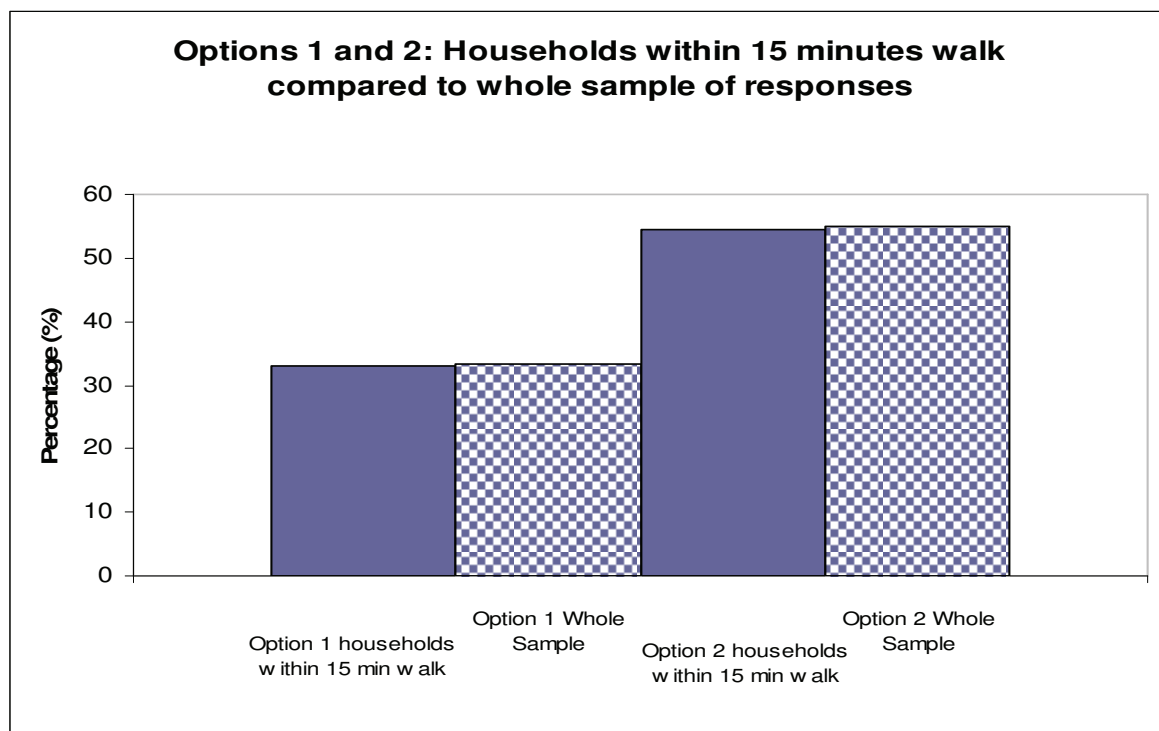
it with one respondent stating that '*(the funfair) is a horrible time for users of the Level. It is ugly, messy, smelly & noisy. Please STOP funfair coming to The Level*'. Responses also included '*I hate the funfair*' and '*Funfair – No!*'.

### 3.3 Breakdown of choice of design options

#### 3.3.1 Households within 15 minutes walk x whole sample

Postcodes had to be provided to validate the completed questionnaires. From this data it is possible to identify the locations of the respondents around the city, including the numbers of completed surveys from households within the 15 minute walking catchment area.

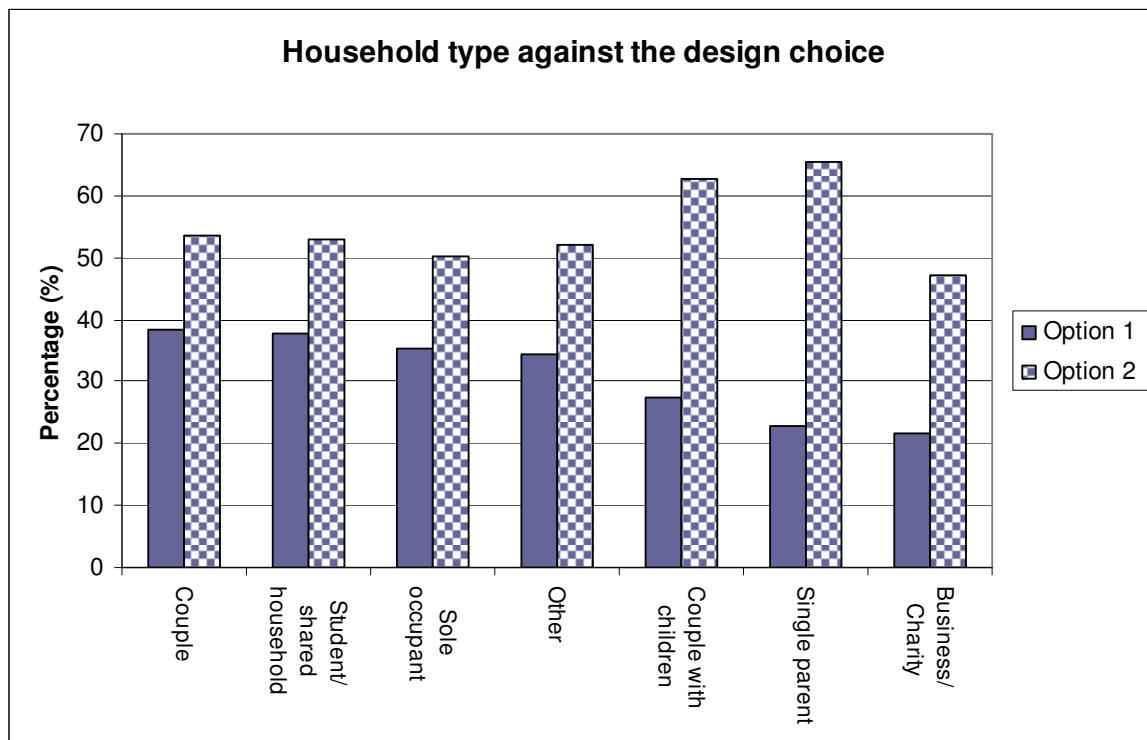
The percentages of respondents within the 15 minute catchment were very similar to overall percentage of respondents choosing option 1 or option 2 as shown in the graph below. The geographic spread of respondents' preferences can be seen in appendices E.



**Figure 11 Design options for respondents within 15 minute catchment against whole sample**

#### 3.3.2 Household type x choice of park design

The data indicates that the highest percentages of respondents in favour of moving the skatepark to the north of the Rose Walk are households with children. Those who prefer the option to keep it south of Rose Walk include couples, shared occupancy and sole occupants.



**Figure 12 Design choice against household type**

### 3.3.3 Main reason to visit The Level x choice of park design

Those in favour of keeping the skatepark at the southern end of the park currently use it for tranquil activities such as relaxing and enjoying nature but also include those who use the northern end of the park for activities like Frisbee, running and walking.

Households who currently use the southern end of the park e.g. skatepark users, users of the paddling pool and playground are those who want to see the skatepark moved out of this area.

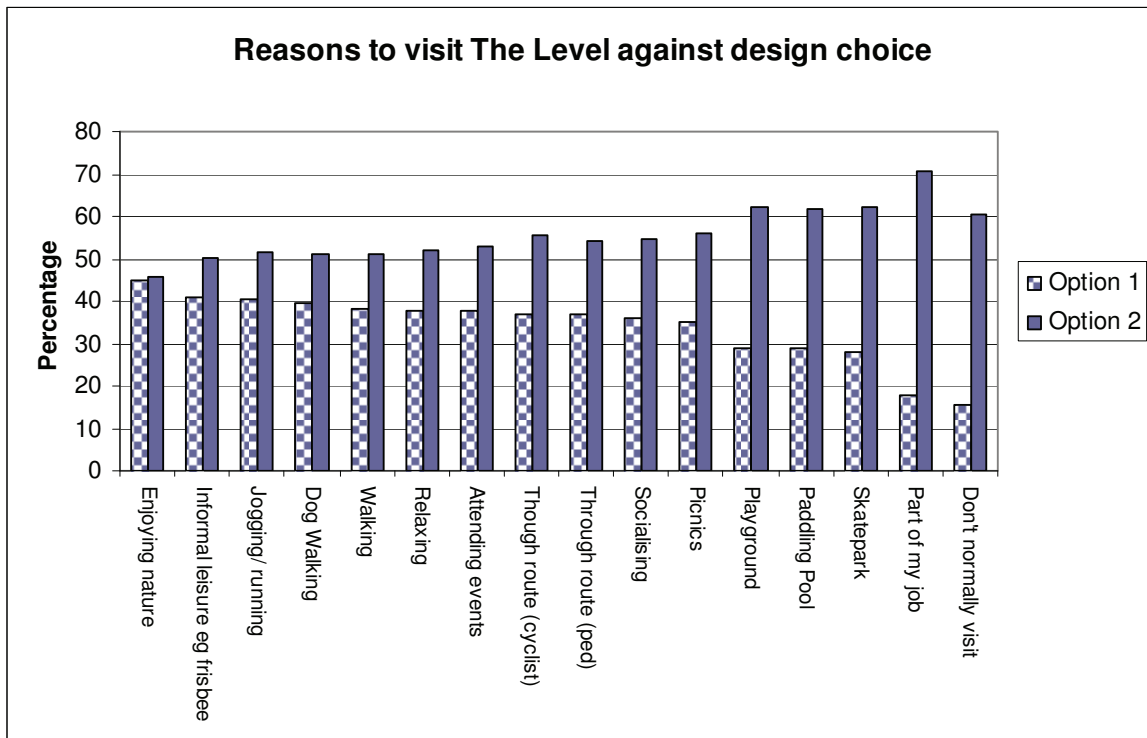


Figure 13 Design choice against the respondents reasons to visit The Level

3.3.4 Areas you would appreciate x choice of park design

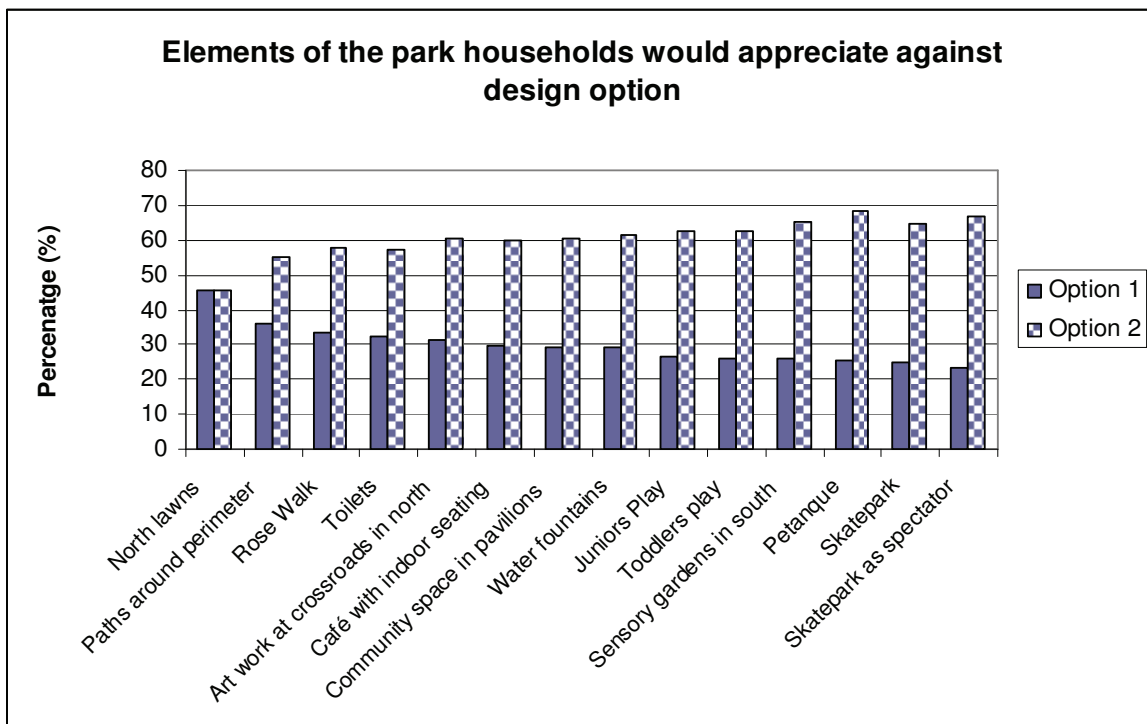


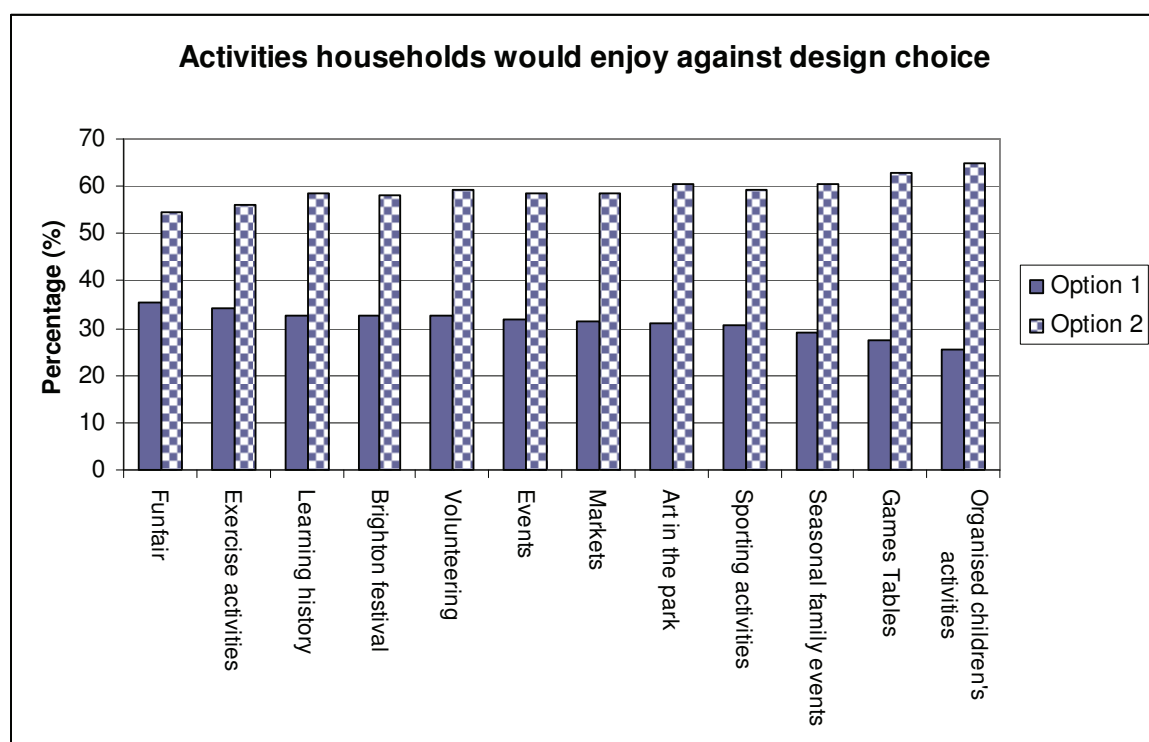
Figure 14 Design choice against the elements of the park respondents would appreciate

This question asked people about the physical layout of the park. 45% of households who prefer that the skatepark stay in the southern end of the park say they would appreciate the north lawns. The play areas and skatepark are further down in their list of priorities.

Conversely those who want the skatepark to the north of the rose gardens see the north lawns area as lower on their wish list and chose areas which are more action-packed such as petanque, skatepark and play areas and also the sensory areas such as the fountains and sensory garden.

### 3.3.5 Activities your household would appreciate x choice of park design

The most popular activity for those who chose option 1 is the funfair which takes place on the north lawns of The Level. Households who choose option 1 tend not to prioritise family type activities whereas the converse is true for households who choose option 2 who prioritised organised children's activities, games tables and seasonal family events.



**Figure 15 Design choice against the activities respondents would enjoy**

### 3.3.6 Age of respondent x choice of park design

Where respondents selected option 1, a higher percentage were of older age ranges while those who selected option 2 were made up of younger age ranges. The aged 75+ group have a much high proportion of people who have no preference or like both designs (23%) compared to the whole sample (11.5%).

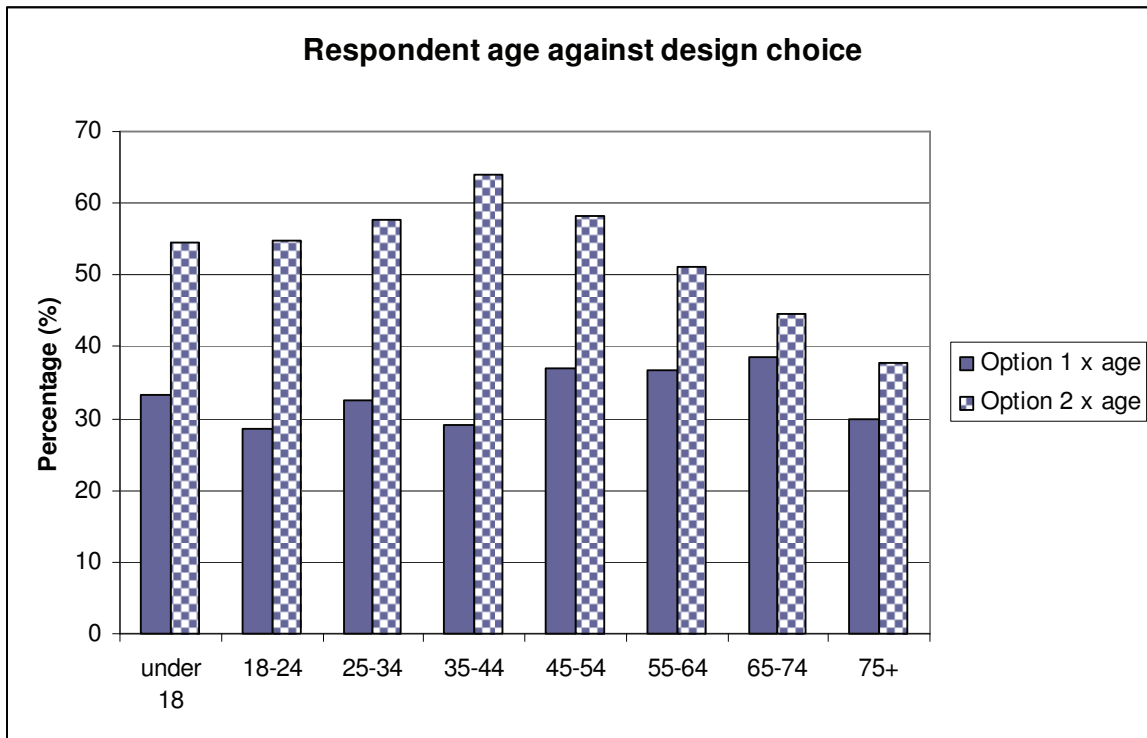


Figure 16 Design choice against the age of the respondent

3.3.7 Gender x choice of park design

A higher proportion of the sample choosing option 2 is women.

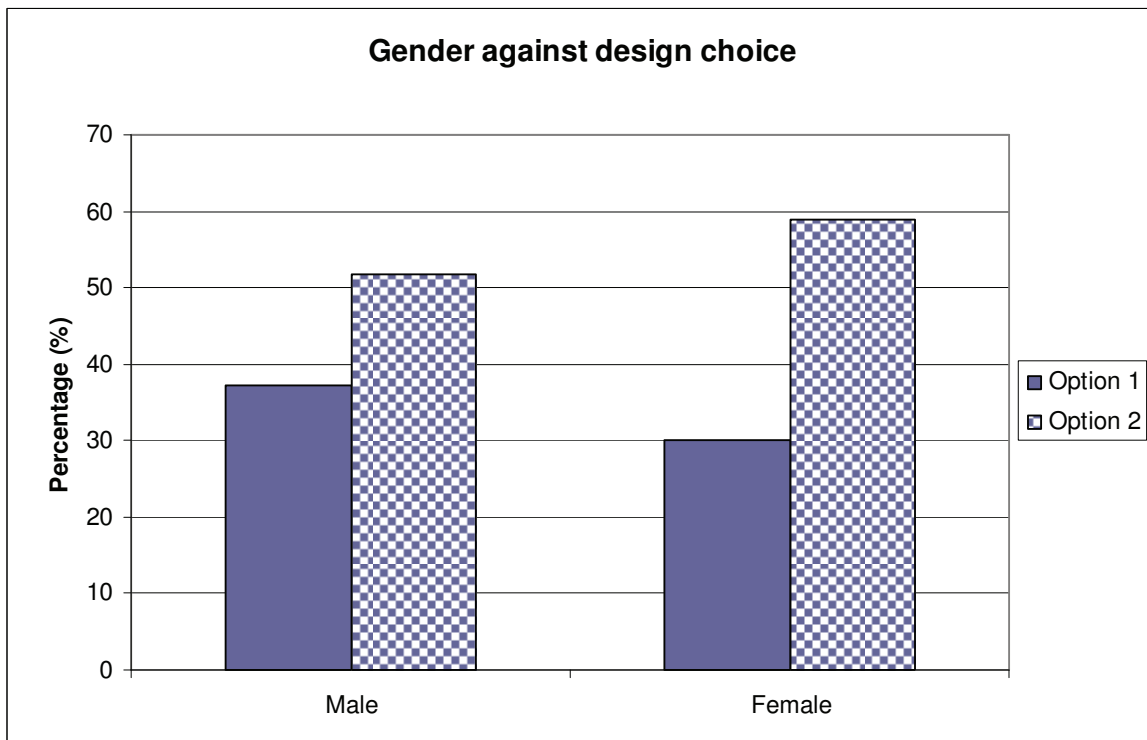
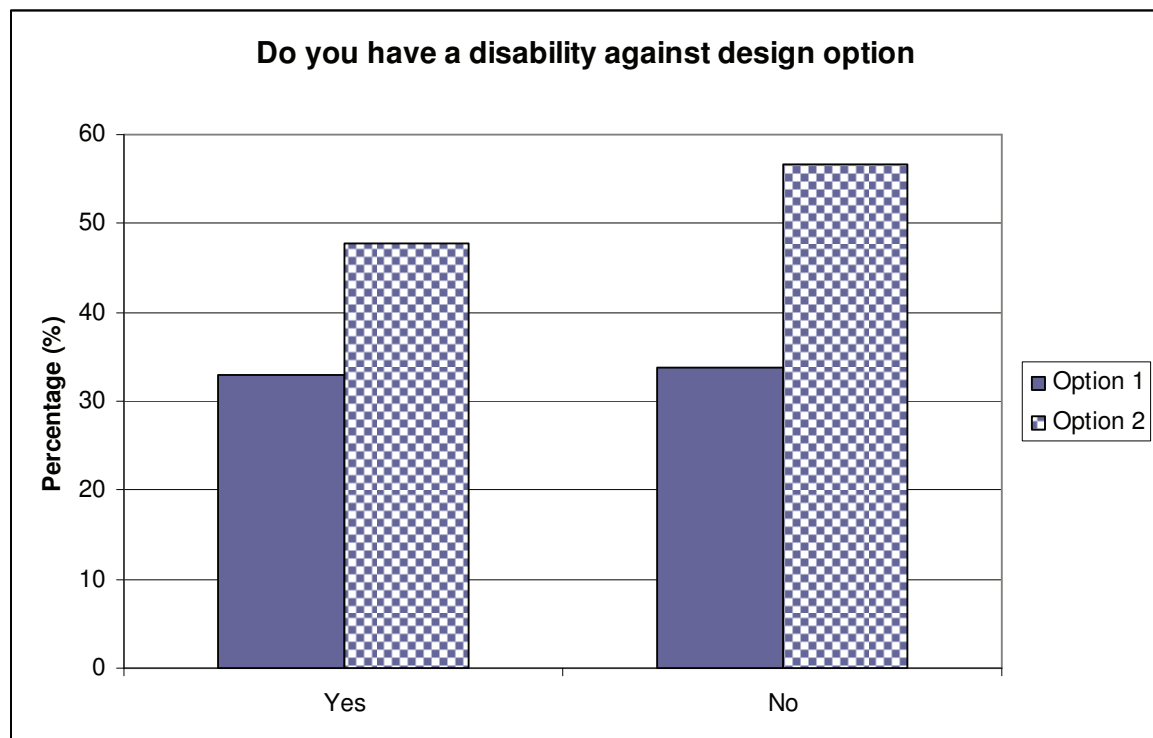


Figure 17 Design choice against gender

## 3.3.8 Disability x choice of park design



**Figure 18 Design choice against disability**

The percentage of people who say that they have a disability and choose option 1 is only 0.8% less than the whole sample who choose option 1, whereas for option 2 the percentage is 7.5% less. This group have a much high proportion of people who have no preference or like both designs (19%) compared to the whole sample (11.5%).



## **4 SUMMARY**

---

### **4.1 Response to the questionnaire**

---

A total of 3,330 questionnaires were completed, considerably more than the consultation carried out in autumn 2009 when 379 questionnaires were completed. The majority of respondents were from households within the 15 minute catchment who were sent questionnaires by direct mail. Of the 27,291 sent out, 2735 questionnaires were returned from this mail out, a 10% return rate. The overall majority of respondents used the paper questionnaires even though they were encouraged to submit using the on-line portal.

The data for this survey identify that over 50% of respondents were female, in comparison with the consultation in 2009 where over 50% of the respondents were male. A higher percentage of respondents (12% compared to 10% in 2009) stated they had a long-standing illness, disability or infirmity.

Responses to this consultation were received from a wider spread of people from different ethnic backgrounds and a higher response from LGBT groups compared to the responses received in 2009.

### **4.2 Use of the park**

---

In comparison with the previous consultation that have been carried out on the project (2006 and 2009), this consultation focussed on primarily identifying respondents preferred skatepark location and what areas and activities the household would appreciate.

The data from the completed surveys indicated that the park is a popular place for people to meet, relax and socialise and attending events/activities that are held in the park. As previously identified in past consultation, the majority of respondents use the park as a walking or cycling through route. A visitor count held in March 2011 reflects this where 70% of people counted at the park were traversing through the area. However, the summer count in August 2010 identified more people stationary within the park (54%).

10% (328) of the respondents do not currently use The Level which is twice the amount of non-park users sampled in the 2009 consultation.

The comments received on the questionnaires demonstrate that people have concerns about the noise from the skatepark and anti-social

behaviour at The Level. A need for improved toilet facilities has been identified as a priority improvement for the park and is backed up by 60% of respondents stating that it would be one of the areas that would be appreciated.

In the past there has been much anecdotal evidence that many consider The Level unsafe, especially at night, and also it has a reputation of drug and alcohol abuse. This has been reiterated in this consultation as well as the 2009 consultation as respondents have commented that the park currently feels unsafe.

Along with the toilets, the proposal for a new café with indoor seating, the water fountain and the Rose Walk have been identified as the main elements that would be appreciated at the park. Positive feedback about having a café with indoor and outdoor seating was also received in the 2009 consultation. All other elements of the new designs received significant interest.

The majority of the activities that households have commented that they would enjoy are organised events such as performances as part of the Brighton Festival. Smaller events, similar to those currently organised by the City Parks Rangers and Friends of The Level also received positive feedback, as well as the range of other activities respondents could select.

### **4.3 Designs**

---

Of the two designs shown at the consultations, the majority of respondents (55%) preferred option 2, which showed the skatepark to the north of the Rose Walk. 48% of the respondents felt that the southern area of the park would be more restful, more family orientated and less congested if the skatepark was moved to the north side of the Rose Walk. The results were very similar for households within the 15 minute walk catchment.

The results from this consultation reflect those from the 2009 consultation where 57% of the households that responded preferred the design with the skatepark in the northern end of the park and 31% preferred the skatepark to remain where it was.

The responses for each option and for areas and activities which would interest them most were polarised showing how different households responded according to how they currently use the park and the activities they enjoying taking part in.

For those who were in favour of the skatepark moving, the highest percentage was households with children, younger age groups (35 – 44)

and females. Their main reason to visit involved using the playground, skatepark and paddling pool. The areas they said they would appreciate most were the sensory garden, petanqué area and skatepark and the activities they were most interested in were children's activities, games tables and seasonal family events.

The highest percentage of respondents who chose this option prioritised family type interests and activities suggesting that they felt this would be better for families. However, contradicting this one of the main reason why households preferred keeping the skatepark in the southern end was that they felt it would be better for families.

For those in favour of keeping the skatepark where is currently is, the highest percentage were couples, shared occupancy and sole occupants, older age ranges (45 – 75) and males. Their main reason to visit was to enjoy nature, playing informal sports and jogging/running. The areas they said they would appreciate most were the north lawns, perimeter path and Rose Walk and they were interested in the funfair, exercise and learning about the history of the park.

Over half of these respondents felt that this design preserved the green space in the north end of the park and some were concerned that anti-social behaviour would increase if the skatepark moved to the northern end of the park.

Respondents aged over 75 years and those with disabilities had a higher proportion of liking both of the designs.

The majority of respondents supported the proposal for a new skatepark facility within the park and only 28 residents stated that they preferred there not to be a skatepark at The Level.

Although there was a small percentage of residents (1%) who were concerned about the cost of the project and felt it could be a waste of money, the overall feeling about improving The Level was positive and supportive.

## **5 CONCLUSIONS**

---

### **5.1 Overall concept**

---

It can be concluded from the past two consultations in October 2009 and March 2011 that there is strong support for improving The Level as a park which people of all ages and abilities can enjoy. In this consultation over 3,000 households took the time to respond to this consultation indicating a high level of interest in the park's future and a desire to have their views taken into consideration.

### **5.2 Position of skatepark**

---

It can be concluded from the results of the two public consultations held in the past 2 years that the majority of park users have a desire to relocate the skatepark to the northern end of the park. This does not however mean that individuals don't feel strongly about the skatepark moving, which has been apparent from the meetings and workshops held for local residents and representatives from community groups.

During the consultation in 2009, some residents expressed strong concerns about moving the skatepark. During the development stage of the project, workshops and meetings were held with representatives from local community groups, groups who were under-represented in the previous consultation, those with special needs and interests and relevant service providers (council officers, statutory bodies and third-sector organisations) in order to consider alternatives and solutions to mitigate the main concerns and find a compromise.

Some changes were made to the Master Plan as a result of this work and a decision was made to seek the views of a larger number of residents to check whether the views given at the 2009 represented a larger percentage of the local residents.

This consultation carried out in March 2011 has shown that the original consultation did represent the views of the wider community, with both results coming out very similar. This is a consistent response over the two years and reflects anecdotal evidence going back to 2005 when moving the skatepark was first considered.

Although one of the aims was to open up the park so individuals feel they could use elements within the whole park and were not excluded from any one area, the analysis of the choice respondents made indicated that they were primarily influenced by how they currently use The Level.

### **5.3 Areas people would appreciate**

---

The choices people made showed that the most popular elements in the proposed Master Plan include the new features such as the café with indoor and terrace seating, public toilets, water fountains and sensory gardens. The Rose Walk was also high on the list which along with flower gardens and fountain does indicate that park users would welcome into the park more attractive and sensory elements of floral displays and moving water. All the other elements were well supported with all getting more than 600 households selecting them. There were 187 other suggestions with no one element mentioned more than seven times. Overall the data does suggest that the most important elements have been identified and included into the Master Plan.

### **5.4 Activities people are interested in**

---

The Level has had a long association as a venue for events and activities and it is not surprising that the activities people were most interested in included local community events, Festival events and Markets. Art in the Park was also popular as a new activity and the learning and volunteering activities which need to be included for the 'Parks for People' bid were well supported. All activities received over 700 responses which overall does indicate that any events and activities planned would be well attended and welcomed by the local community. There were 196 other suggestions with no one element mentioned more than six times; however they give an interesting mix of ideas which would satisfy a diverse range of park users and so should be taken into consideration.

### **5.5 Balanced representation and response rate**

---

The breakdown of the composition of the respondents for this consultation has demonstrated that a wider demographic sample of people have given their feedback on the proposed plans for The Level than the 2009 consultation.

It was recommended in the 2009 Consultation Report that separate focus groups were set up with minority and under-represented groups and during the development phase this has been undertaken. It is possible that this was partly responsible for the raising the profile of the project to these groups and so encouraging them and their members to take part in the public consultation. It is also likely that the direct mailing of the questionnaires to all the households in the area was more effective in reaching those groups rather than relying on them to come along to a consultation event or responding to posters and advertising alone.

In comparison to the 2009 consultation, this one carried out in March 2011 has been more successful in terms of raising awareness and allowing a significantly higher number of residents to get involved in giving their views and therefore influencing the decision making process. The fact that so many responded does imply that this was appreciated and one of the emails received saying '*... thank you – it's a very clearly written and inclusive document and I welcome the opportunity to have 'my say' re: the two options'*' does back this up.

It has also shown that the views gathered in 2009 were of sufficient quantity to represent the wider views. This along with some of the other findings, including that people are often influenced by how they use an existing space and that direct mail outs are more successful, should be considered when developing future park consultations.

## **6 APPENDICIES**

---

## Appendix A – Example of questionnaire information booklet

# The Level consultation March 2011

## Information booklet Have your say

Brighton & Hove City Council has been working on proposals to improve The Level. We have come up with two designs and we would like your views on what you think is the best option.

Please take time to read this information and complete the questionnaire on-line at <http://consult.brighton-hove.gov.uk/> portal or return the enclosed paper questionnaire by 31 March 2011 so that your views can be considered.

### Improving The Level

Following a public consultation in 2009, we have been working with a range of different user groups, third-sector organisations, service providers, designers and parks staff to develop proposals for The Level.

These proposals aim to restore The Level as a high quality, well used and vibrant urban city centre park which celebrates its cultural heritage and provides activities and facilities to meet the needs of today's park users.

It includes the restoration of the original 1920s design layout and a new playground, skatepark, café, public toilets and park's staff and volunteer facilities.

You can find out more about the proposals by logging on to our website [www.brighton-hove.gov.uk/thelevel](http://www.brighton-hove.gov.uk/thelevel) or by visiting one of our exhibitions:

#### Staffed exhibitions

**Wed 2 March** 9am – 6pm  
at Churchill Square by H&M Adults

**Tue 8 March** 11am – 2pm  
at Phoenix Gallery opp St Peter's Church

**Mon 14 March** 9am – 2pm old Co-op Building, Cnr Baker Street & London Road

**Thu 24 March** 12 noon – 4pm old Co-op Building, Cnr Baker Street & London Road

**Tue 29 March** 2pm – 5pm at Phoenix Gallery, opp St Peter's Church

#### Un-staffed exhibitions

**Mon 7 March to Fri 11 March**  
at the Jubilee Library Foyer

**Mon 14 March to Sat 26 March** old Co-op Building, Cnr Baker Street & London Road

**Mon 28 March to Thu 31 March**  
at the Jubilee Library Foyer



**LOTTERY FUNDED**

**Brighton & Hove  
City Council**



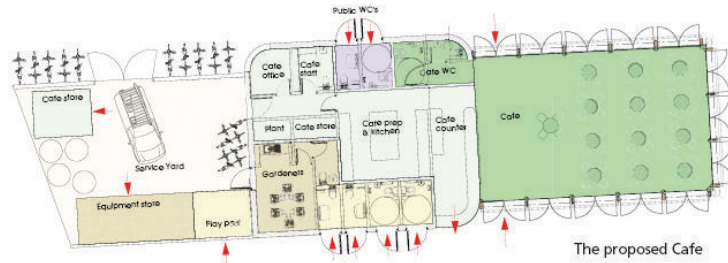
## The proposals

The proposals include a new water feature, café building and skatepark. The information below gives an idea of how they would look.

The original boating pond will be restored as a modern water feature using water jets. This will create an attractive focal point for all park users to play in and enjoy.

Two rows of water jets in the central areas will provide fun for all ages while the ones on the outside will be gentler and suitable for younger children. With water on both sides, the bridges will once again have a purpose, although you will still be able to walk through the water feature without getting wet.

The columns and pergolas with climbing flowering plants around the water feature will be restored.



The proposed Cafe

A new building will feature a café, public toilets and staff facilities. It will use new green technologies to make it as carbon-neutral as possible and will be designed to make the best use of natural light. The two pavilions on either side of the water fountain will be restored to provide community space for exhibitions, meetings, events and volunteer activities.



The skatepark will be replaced with a concrete sunken facility of a similar size (dependent on funding), and designed to be integrated with the rest of the park. It will include a multi-use plaza area which other park users will be welcome to enjoy and where younger children can practice with parents or guardians sitting nearby.



This artist impression shows how the new skatepark might look. However it is not the actual design; this will be developed once a decision is reached on the location.

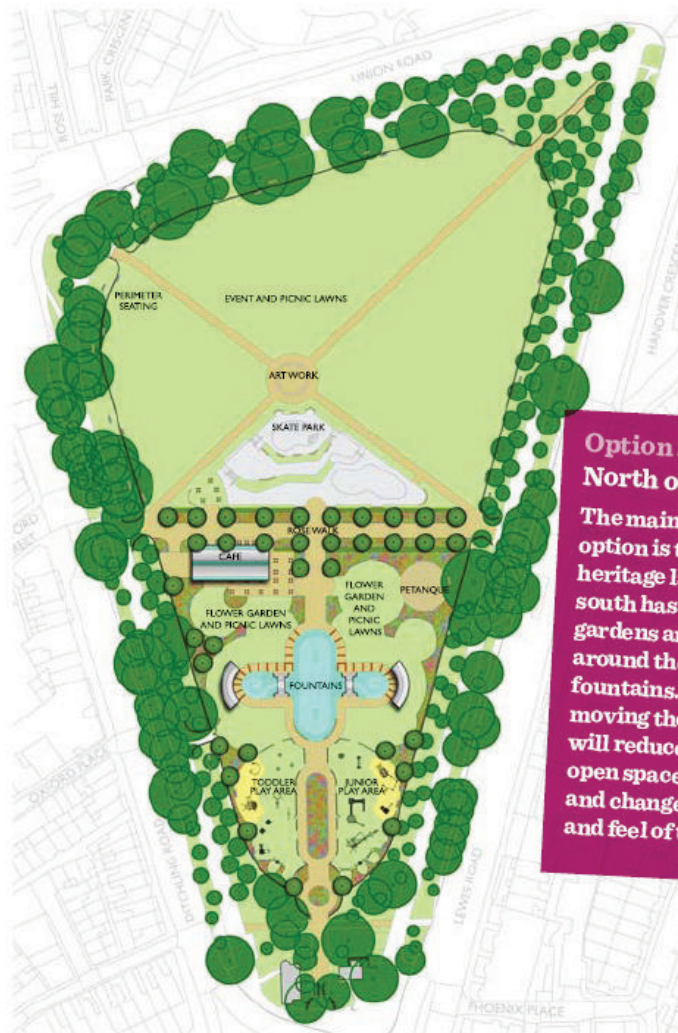
The Rose Walk flower borders will be rejuvenated with a mix of roses, other perennials, bulbs and evergreens to provide year round interest.

New gardens and lawns in the south will provide an intimate and sensory space. It will have shady areas and will be good for picnics, enjoying flowers and just relaxing near the water fountains.

A combination of sunny open areas in the north and a sensory garden in the south will provide greater variety and help open up the whole park to a

diverse mix of users.

The new playground will use both sand and grass with a range of equipment to provide more challenge and interest for children of all ages and abilities.



**Option 2 - Skatepark North of Rose Walk**  
 The main benefit of this option is that the restored heritage layout in the south has larger sensory gardens and picnic lawns around the café and water fountains. However, moving the skatepark will reduce the amount of open space in the north and change the open look and feel of this area.

## Funding

We have already secured £256,000 to improve the playground and skatepark. This is not sufficient to carry out all the work needed to improve the rest of the park. So last year we submitted a successful first-round Heritage Lottery Fund and Big Lottery Fund 'Parks for People' grant application. This meant we were awarded funding to develop detailed proposals which will be used in our second-round application. This second stage is also competitive and therefore the funding is not guaranteed. We are also seeking additional funding for the skatepark, which is not currently included in the 'Parks for People' bid.

## Improving management & maintenance

Our proposals include a 10 year Management & Maintenance Plan and the recruitment of a full-time site based Park Manager.

## Improving safety

The aim is to create a park which is safe and welcoming. Restoring and maintaining the park to a high standard, better lighting and improved visibility will all help achieve this. The café, increased visitor numbers and the presence of a site based Park Manager will increase the natural surveillance and improve security. Working with various community safety partners, we are also looking at what enforcement and intervention measures are needed.

## Increasing users

We will have an Activity Plan which will ensure the park is accessible and inviting to park visitors. This will include improved visitor facilities such as a new café, toilets, seating and information. A programme of activities for visitors to enjoy, get involved through volunteering and increase their learning is also being developed.

## What the new park will look like

These two artist impressions give an idea of what the park will look like if we are successful in our 'Parks for People' bid and are able to carry out all the proposed improvements.



Option 1



Option 2

### What happens next?

All views received during the consultation will be carefully considered and a final decision on the design will be made by the council in June or July.

After a decision is made, we will work up the finer details for the design. This will include, for example, the location and type of seating, what lighting is needed, what plants will be used and finalising the café layout and how many public toilets to include.

These proposals will be used in preparing our Heritage Lottery Fund and Big Lottery Fund 'Parks for People' second-stage application which is due to be submitted in August 2011, with a decision expected in January 2012. If successful, it is anticipated that the improvement work will take place between winter 2012 and summer 2013.

We will also be working to secure additional funding for the skatepark and other aspects of the Masterplan not included in the 'Parks for People' bid such as the Art Work at the north end crossroads.

Following the council's decision, the results of this consultation will be published on our website.



### Contact us

- Fill out the questionnaire on-line on <http://consult.brighton-hove.gov.uk/portal>
- Find out more by visiting [www.brighton-hove.gov.uk/thelevel](http://www.brighton-hove.gov.uk/thelevel)
- Join the mailing list to get regular updates about the project by emailing us on [parkprojects@brighton-hove.gov.uk](mailto:parkprojects@brighton-hove.gov.uk)
- If you do not have access to the internet, please write to us at Brighton & Hove City Council, City Parks Projects, Hollingdean Depot, Upper Hollingdean Road, Brighton, BN1 7GA or call us on 01273 292929.

Thank you for your time and don't forget to fill in the on-line questionnaire or complete and return the enclosed paper questionnaire before 31 March 2011.

Translation? Tick this box and take to any council office.

ترجمة؟ ضع علامة في المربع وخذها إلى مكتب البلدية.	Arabic <input type="checkbox"/>
অনুবাদ? বক্সে টিক চিহ্ন দিয়ে কাউন্সিল অফিসে নিয়ে যান।	Bengali <input type="checkbox"/>
需要翻譯? 請在這方格內加劃, 並送回任何市議會辦事處。	Cantonese <input type="checkbox"/>
ترجمه؟ لطفاً این مربع را علامتگذاری نموده و آن را به هر یک از دفاتر شهرداری ارائه نمایید.	Farsi <input type="checkbox"/>
Traduction? Veuillez cocher la case et apporter au council.	French <input type="checkbox"/>
需要翻譯? 請在這方格內划勾, 并送回任何市议会的办事处。	Mandarin <input type="checkbox"/>
Tłumaczenie? Zaznacz to okienko i zwróć do któregośkolwiek biur samorządu lokalnego (council office).	Polish <input type="checkbox"/>
Tradução? Coloque um visto na quadricula e leve a uma qualquer repartição de poder local (council office).	Portuguese <input type="checkbox"/>
Tercümesi için kareyi işaretleyiniz ve bir semt belediye bürosuna veriniz	Turkish <input type="checkbox"/>
	other (please state) <input type="checkbox"/>

This can also be made available in large print, Braille, or on CD or audio tape

## Appendix B – Example of questionnaire form

# The Level consultation March 2011 Questionnaire

Brighton & Hove City Council is proposing changes to improve The Level and we want to make sure we consult widely with residents living near the park. You have received this questionnaire because you live within a 15 minute walk of The Level.

People outside this area are also welcome to have their say and can do so through the council's on-line consultation portal or by requesting a paper copy of the questionnaire.

The information provided in the enclosed leaflet describes the changes and the options for the park.

To make sure your views are considered, please return your completed questionnaire in the Freepost envelope provided by 31 March 2011 at the latest. No stamp is required.

Or you could save time by completing this questionnaire online at <http://consult.brighton-hove.gov.uk/portal>



Artist impression of how  
Option 1 might look



Artist impression of how  
Option 2 might look



LOTTERY FUNDED



Brighton & Hove  
City Council

## Your address and post code

In order to prevent multiple submissions of forms by individuals, we will only accept one questionnaire per household. To monitor this, we need to ask for your address and postcode. The information received will be treated in strictest confidence and it will not be used individually or for any other purposes outside this survey.

Your Full Address\*


Your Full Post Code\*

\*These fields are mandatory. If you don't fill them in we won't be able to process your response.

## Tell us about your household

1. What is the make up of your household? (tick one box)

- |   |   |   |
|---|---|---|
| <input type="checkbox"/> Couple                     | <input type="checkbox"/> Couple with children       | <input type="checkbox"/> Single parent      |
| <input type="checkbox"/> Sole occupant              | <input type="checkbox"/> Student / shared household | <input type="checkbox"/> Business / Charity |
| <input type="checkbox"/> Other (please state) _____ |   |   |

2. For households with children, please indicate age range and number of children?

- |                            |                      |                             |                      |
|----------------------------|----------------------|-----------------------------|----------------------|
| Number of children under 5 | <input type="text"/> | Number of children 12 to 15 | <input type="text"/> |
| Number of children 5 to 11 | <input type="text"/> | Number of children 16+      | <input type="text"/> |

3. What are the main reasons members from your household visit The Level?

(tick one or more boxes)

- |   |   |  |
|---|---|--|
| <input type="checkbox"/> Relaxing                       | <input type="checkbox"/> Picnics                    | <input type="checkbox"/> Enjoying nature               |
| <input type="checkbox"/> Walking                        | <input type="checkbox"/> Playground                 | <input type="checkbox"/> Attending events / activities |
| <input type="checkbox"/> Dog Walking                    | <input type="checkbox"/> Paddling pool              | <input type="checkbox"/> Through route (pedestrian)    |
| <input type="checkbox"/> Socialising with friends       | <input type="checkbox"/> Skate park                 | <input type="checkbox"/> Through route (cyclist)       |
| <input type="checkbox"/> Informal leisure eg Frisbee    | <input type="checkbox"/> Jogging/Running            | <input type="checkbox"/> Part of my job                |
| <input type="checkbox"/> Don't normally visit The Level | <input type="checkbox"/> Other (please state) _____ |  |

## Your views on the park design proposals

Two options are being considered. There are benefits and compromises with each option, and these should be considered before answering this question. **Please read the information provided in the enclosed leaflet which describes these differences.**

### 4. Overall, which option does your household prefer? (tick one box)

- |   |   |
|---|---|
| <input type="checkbox"/> Option 1 (skatepark <u>south</u> of Rose Walk)   | <input type="checkbox"/> Option 2 (skatepark <u>north</u> of Rose Walk) |
| <input type="checkbox"/> Don't know                                       | <input type="checkbox"/> Have no preference / like both                 |
| <input type="checkbox"/> Household does not agree (provide details below) |   |

Do you have any further comments about your choice? Please explain.

### 5. Please indicate which areas you think individuals in your household would appreciate? (tick one or more boxes)

- |   |  |   |
|---|--|---|
| <input type="checkbox"/> North lawns                      | <input type="checkbox"/> Toddlers play | <input type="checkbox"/> Café with indoor seating     |
| <input type="checkbox"/> Art work at crossroads in north  | <input type="checkbox"/> Juniors play  | <input type="checkbox"/> Community Space in Pavilions |
| <input type="checkbox"/> Rose Walk                        | <input type="checkbox"/> Skatepark     | <input type="checkbox"/> Skatepark (as a spectator)   |
| <input type="checkbox"/> Sensory gardens / lawns in south | <input type="checkbox"/> Pétanque      | <input type="checkbox"/> Paths around the perimeter   |
| <input type="checkbox"/> Water fountains                  | <input type="checkbox"/> Toilets       |   |
| <input type="checkbox"/> Other (please specify) _____     |  |   |

### 6. Please indicate what activities individuals in your household would appreciate? (Please tick one or more boxes)

- |  |  |
|--|--|
| <input type="checkbox"/> Sporting activities (eg football, frisbee)                      | <input type="checkbox"/> Learning (eg history trail, conservation) |
| <input type="checkbox"/> Exercise activities (eg tai chi, health walks)                  | <input type="checkbox"/> Volunteering (eg gardening club)          |
| <input type="checkbox"/> Games tables (eg table tennis, chess)                           | <input type="checkbox"/> Events (eg music in the park, dog shows)  |
| <input type="checkbox"/> Organised children's activities (eg junior rangers club, games) | <input type="checkbox"/> Seasonal family events (eg halloween)     |
| <input type="checkbox"/> Art in the park (eg exhibitions, classes)                       | <input type="checkbox"/> Brighton Festival                         |
| <input type="checkbox"/> Markets   | <input type="checkbox"/> Funfair                                   |
| <input type="checkbox"/> Other (please specify) _____                                    |  |

Brighton & Hove City Council values and respects the diversity of all people living and working in Brighton & Hove. The council has an equalities policy to ensure that all people are treated fairly when accessing our services, irrespective of race, or sexual orientation, disability, religion or belief or age.

The information contained within this form will be used for monitoring purposes only and no individual will be identifiable. In compliance with the Data Protection Act 1998 all details are kept in strict confidence at all times.

**Sex** (tick one box)  Male  Female If you also identify as transgender please tick here

**Age** (tick one box)  Under 18  25 - 34  45 - 54  65 - 74  
 18 - 24  35 - 44  55 - 64  75+

**Disability** (tick one box)  
 Do you have any long-standing illness, disability or infirmity?  Yes  No

**Ethnicity** (tick one box)

Asian & Asian British

- Indian  
 Pakistani  
 Bangladeshi  
 Other Asian background

Black & Black British

- Black British  
 Black Caribbean  
 Black African  
 Other Black background

Chinese or other

- South-East Asian  
 Chinese  
 Other ethnic background  
 Don't know

Mixed

- White & Black Caribbean  
 White & Black African  
 White & Asian  
 Other mixed background

White

- White British  
 White Irish  
 Other White background

**Religion/faith** (tick one box)

- None  Christian  Jewish  Hindu  Muslim  Sikh  Buddhist  
 Other (please state) \_\_\_\_\_

**Are you** (tick one box)

- Heterosexual  Gay  Lesbian  Bisexual  Unsure  
 Other (please state) \_\_\_\_\_

**Thank you for taking your time to complete this questionnaire. Your views will be used to inform the decision on which option is chosen for The Level.**



## Appendix C – Example of poster



# The Level consultation

## 1 to 31 March 2011

**Final chance to have your say on how  
The Level will look in the future**

The proposals include a new water feature, café and public toilets, skatepark and playground. For the whole park there will be an improvement of green space, new paths, lighting, signage and benches will be provided and the stone walls repaired. Two options have been developed for this consultation, the main difference being the location of the skatepark.

**Tell us which design you think is best for the future of The Level**

You can do this in a number of ways ...

- If you live within 15 minutes walk of The Level you should received a consultation pack through the post
- You can log onto the council's consultation portal <http://consult.brighton-hove.gov.uk/> portal to find out more about the proposals and complete the questionnaire
- Call 01273 292929 for a consultation pack
- Come along to one of the exhibitions.

### Staffed exhibitions

**Wednesday 2 March** 9am – 6pm  
at Churchill Square by H&M Adults

**Tuesday 8 March** 11am – 2pm  
at Phoenix Gallery opposite St Peter's Church

**Monday 14 March** 9am – 2pm old Co-op Building, corner Baker Street & London Road

**Thursday 24 March** 12noon – 4pm old Co-op Building, corner Baker Street & London Road

**Tuesday 29 March** 2pm – 5pm at Phoenix Gallery, opposite St Peter's Church

### Un-staffed exhibitions

**Monday 7 March to Fri 11 March**  
at the Jubilee Library Foyer

**Monday 14 March to Sat 26 March** old Co-op Building, corner Baker Street & London Road

**Monday 28 March to Thu 31 March**  
at the Jubilee Library Foyer

[www.brighton-hove.gov.uk/thelevel](http://www.brighton-hove.gov.uk/thelevel)

    
**LOTTERY FUNDED**

**Brighton & Hove  
City Council**

Appendix D – Example of A1 board

# The Level consultation

## 1 to 31 March 2011

**Final chance to have your say on how  
The Level will look in the future**

We are preparing our final round application for a Heritage Lottery Fund and Big Lottery Fund 'Parks for People' grant and want your views on which design option you think is best for the future of The Level.

You can give your views in a number of ways ...

- If you live within 15 minutes walk of The Level you should receive a consultation pack through the post
- You can log onto the council's consultation portal <http://consult.brighton-hove.gov.uk/portal> to find out more about the proposals and complete the questionnaire
- If you don't have access to the internet you can contact us on 01273 292929 to request a consultation pack

You can also come along to one of our exhibitions

**Staffed exhibitions**

Wed 2 March 10am – 6pm at Churchill Square by H&M Adults  
 Tue 8 March 10am – 2pm at Phoenix Gallery opp St Peter's Church  
 Mon 14 March 10am – 2pm at the old Co-op Building, Off Baker Street & London Road  
 Thu 24 March 12 noon – 4pm at the old Co-op Building, Off Baker Street & London Road  
 Tue 29 March 2pm – 5pm at Phoenix Gallery, opp St Peter's Church

**Un-staffed exhibitions**

Mon 7 to Fri 11 March at the Jubilee Library foyer  
 Mon 14 to Sat 26 March at the old Co-op Building, Off Baker Street & London Road  
 Mon 28 March to Thu 31 March at the Jubilee Library Foyer

**Make sure your views are heard by completing your questionnaire by 31 March**



**Option 1 - Skatepark  
South of Rosa Walk**

The main benefit of this option is that it treats the cultural heritage value and the open public space of the lawn area as a separate element of the park. It does mean however that there is less space for the sensory garden and planters around the cafe and water fountain.



**Option 2 - Skatepark  
North of Rosa Walk**

The main benefit of this option is that the restored cafe is in the south with a large sensory garden and planters around the water fountain. However, more open park space in the north and change the open look and feel of this area.

The proposals include a new water feature, cafe and public toilets, skatepark and playground, for the whole park there will be an improvement of green space, new paths, lighting, signage and benches will be provided and the stone walls repaired. Two options have been developed for the consultation, the main difference being the location of the skatepark.



**Option 1**



**Option 2**

The building will be enclosed with a concrete screen of a similar size and designed to be multi-use plaza area which other park users will be welcome to enjoy and where younger children can play. The cafe is on the ground level nearby. The best material for grass is a mix of grass and gravel. The best material for gravel is a mix of gravel and gravel. The best material for gravel is a mix of gravel and gravel. The best material for gravel is a mix of gravel and gravel.

The new playground will use both sand and grass challenge and interest for children of all ages and abilities.

The original housing porch will be restored as a play and enjoy visually. Two rows of water jets in the central area will provide fun for all ages while the ones on the outside will be gentler and suitable for younger children. The water fountain will be restored to provide a purpose, although you will still be able to walk through the water feature without getting wet. The restored columns and pergolas with climbing flowering plants will create a sensory and visual feature. A new building will feature a cafe, public toilets and staff facilities. It will use new green technologies to make it as carbon-neutral as possible and will be designed to make the best use of the building's structure. The location of the water fountain will be restored to provide community space for exhibitions, meetings, events and volunteer activities.




**LOTTERY FUNDED**



### Appendix E – 15 minute walking catchment

Option 1 - 15 min walk south of River Walk  
Option 2 - 15 min walk north of River Walk  
15 min accurate catchment

**Scale: 1:7,211**



N



(c) Crown Copyright. All rights reserved. Licence: 100020999, Brighton & Hove City Council. 2008. Cities Revealed(R) copyright by The GeoInformation(R) Group, 2008 and Crown Copyright (c). All rights reserved.

## Appendix F – Comments on Design Choice

When identifying the location of the skatepark they preferred, 1538 (46%) of the respondents made further comments about their decision.

Some people made more than one point in their response, giving a total of 1931 comments in total. Due to the amount received, the comments have been themed and tabulated against those who chose the two different options.

<b>Option 1 – Skatepark to the south of the Rose Walk</b>	<b>No.</b>	<b>%</b>
Want to keep the area north of the rose walk green/ open	309	44
Concerns about noise from the skate park	47	7
Want north area kept free for events	34	5
Easier to supervise children if all activities in one area	33	5
Concerned about alcohol abuse in park	33	5
Anti-social behaviour would increase if skatepark in north area	24	3.5
Don't want the funfair	19	3
This is a waste of money / concerned about costs	19	3
Don't want a skatepark at all	17	2.5
Opposed to Option 2	16	2.5
Need dog free areas, ensure adequate dog waste bins	16	2.5
Level is unsafe at the moment	16	2.5
Concerned about drug use in the park	14	2
Want to keep the pool	10	1.5
The Level needs improved lighting	9	1
Positive comments about this skate park location	9	1
Must have a park keeper	9	1
This is a better option for families	8	1
The park needs a lot of seating	6	1
Concerns about dogs near skateboarding area	3	
Don't want petanque	3	
Want café to be open to dog walkers	3	
Café needs to provide healthy food	3	
Want area for dogs	3	
Need to stop cyclists diagonally crossing The Level	2	
The Level needs better drainage	2	
Want skate park at southern end of park	2	
Need areas for different skating abilities	2	
Toilets are essential	2	
Concerned about Frisbee, footballs, dogs, children walking onto skatepark	2	
Rose Walk/ entrances need to be opened up	2	
Want half pipes	2	
Skatepark needs to be behind screens	1	
Separate bikes and skate boards from small children	1	

Other one-off comments: <b>Animals, wildlife, fauna:</b> want puppy park, <b>Sport and exercise:</b> don't remove football pitch, want adult outdoor gym, cricket pitch, basketball court <b>Art, theatre:</b> stage for live events <b>Skatepark:</b> concerned about higher rates of injury, want skate park to be made of wood, boxes, round grind rails <b>General:</b> I am disabled and am concerned about skate boarders whizzing about, don't need another café, lock central area at night, teenagers need to have an area that is theirs, want café near toddler area, make south end more accessible, rename The Level as Central Park	17	
<b>Total</b>	<b>698</b>	<b>100</b>

<b>Option 2 – Skatepark to the north of the Rose Walk</b>	<b>No.</b>	<b>%</b>
If skatepark in north area the southern area will be more restful/ more traditional/ more family orientated/ less congested	397	32
Concerns about noise, north is the best position for skatepark	111	9
General positive comments about new skatepark	104	8.5
Want skaters and bikes separated from small children's areas	95	8
Less anti-social behaviour if skatepark in the north area	79	6.5
Concerns about alcohol consumption in the park	69	5.5
Concerns about drug use in the park	55	4.4
Want dog free area and/ or dog waste bins	38	3
Will be able to watch the skaters more easily	35	3
Option 2 allows for more features in the park	29	2
The Level is unsafe at the moment	27	2
Don't want the funfair	24	2
Sensory garden will be better	22	2
The Level needs improved lighting	14	1
Must have a park keeper	14	1
Don't want a skatepark at all	11	1
Want to keep the pool	9	1
Screen off skatepark	6	0.5
Want a lot of seating in the Park	6	0.5
Concerns about noise from the skate park	6	0.5
Want north area kept green/ open	4	
The Level needs better drainage	3	
Need areas in the skatepark for different abilities	3	
Toilets are essential	3	
Want outdoor table tennis	3	
It's easier to supervise children if they are all in one area	2	
Want north area kept free for events	2	
This is a waste of money/ concerned about costs	2	
Open up the Rose Walk	2	
Wildfowl lake, duck pond	2	
Like the idea of petanque	2	
Would like outdoor chess	2	
Want disabled access	2	
Want adult outdoor gym	2	
Want bandstand	2	

Other one-off comments: <b>Animals, wildlife, fauna:</b> area for dogs, fish pond, bee hives, fruit trees, more trees <b>Sport and exercise:</b> Tai chi area, cricket nets at north, football pitches, basketball hoops, sprung wooden flooring for dance with removable tent ceiling <b>Art, theatre:</b> fountains to be as art and tendered for by local colleges, sundial, outdoor film screen, keep the surreal trainer tree, lights on trees, graffiti art walls <b>Skatepark:</b> coloured materials for skatepark to blend in with grass, concerned about skate park users territorial behaviour, skate park in NW corner, want unrestricted view of skatepark to keep eye on kids, want skate boarding events, grind rails and steps not just bowls, make sure design is by experienced skatepark designer, skateboarders need to be included in design, need mix of terrain for skateboard, BMX and scooters. Half pipes and concrete bowls in various sizes are essential <b>General:</b> A-board showing activities, markets good, teenage seating/ hangout area, want railing around outside of park, want picnic area in sunny area not shady, join up cycle routes, need more cycle parking, café needs to provide healthy food	34	
<b>Total</b>	<b>1233</b>	<b>100</b>

**Don't know**

27 comments were received from respondents who did not know which design they preferred.

Comments were focussed on keeping as much green in the park as possible, don't mind where the skatepark goes, it is a waste of money and included 'the most important this is that the improvements are actually done', 'make sure that skaters are involved in the design of the new skatepark' and 'good idea needs more things like this in Brighton'.

**Household does not agree**

A total of 37 comments were received from households who did not agree on the design they preferred.

Two respondents did not like either of the two designs, four would like to see the skatepark somewhere else in Brighton other than at The Level and many felt that the anti-social behaviour within the park had to be addressed first.

Other comments included 'may have had more opinions had I been younger', 'do not visit the park' and 'please stop the fairgrounds coming and taking over The Level'.

**Have no preference / like both of the designs**

A total of 97 comments were received from households who did not agree on the design they preferred.

Comments were focussed around having the skatepark at another location in Brighton, leaving The Level as it is, the anti-social behaviour needs to be addressed and included 'The Level needs to be improved so we believe any investment & development will help', 'the ramps look too small for the BMX riders to use so where will they go?' and 'no real preference however it would be good to increase visibility into cafe/play parts'.